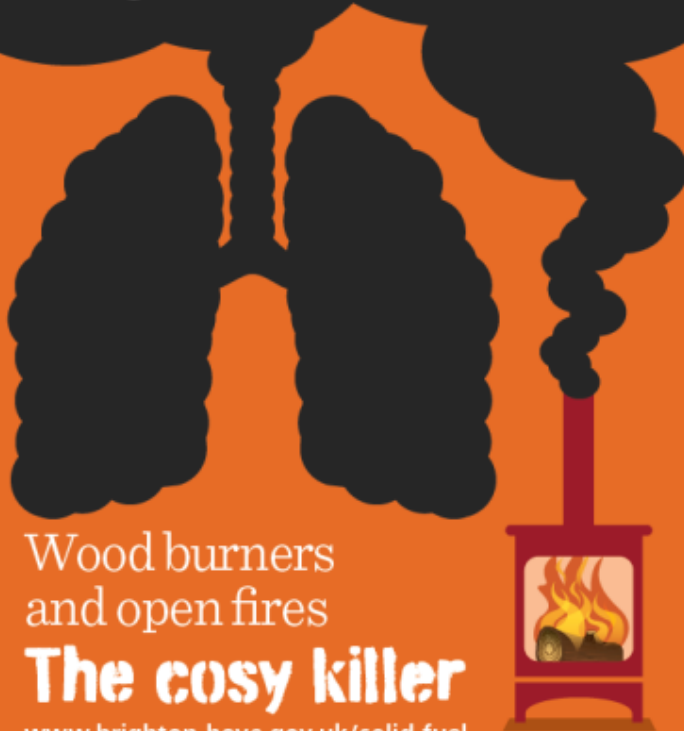


**Report To Update on Solid Fuel Burning  
Initiative, Our New Air Quality Monitoring  
Tools & Associated Data Focusing On Our  
Current Smoke Control Areas**



**Brighton & Hove  
City Council**

Particle air pollution  
contributes to 1 in 20  
deaths of people over  
the age of 30



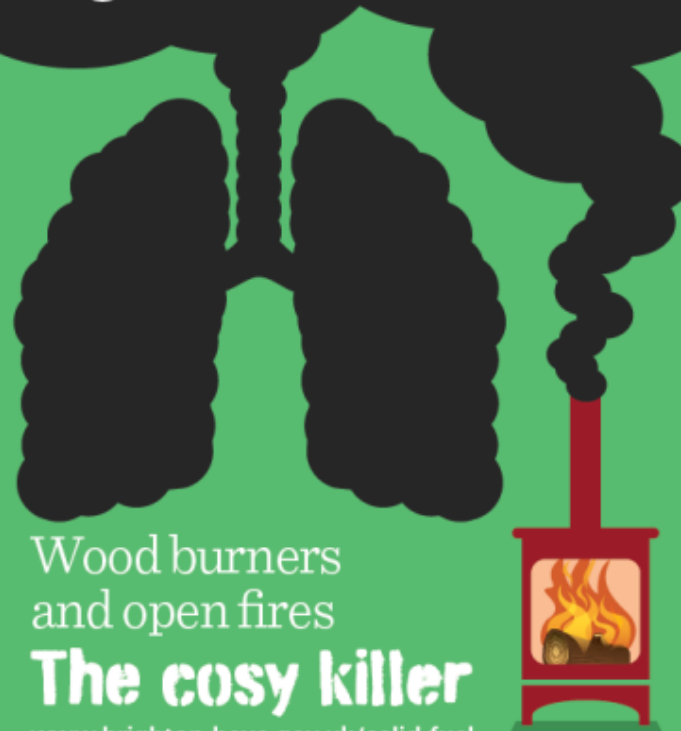
Wood burners  
and open fires

**The cosy killer**

[www.brighton-hove.gov.uk/solid-fuel](http://www.brighton-hove.gov.uk/solid-fuel)



Particle pollution can  
increase your risk of a  
heart attack, stroke and  
lung disease



Wood burners  
and open fires

**The cosy killer**

[www.brighton-hove.gov.uk/solid-fuel](http://www.brighton-hove.gov.uk/solid-fuel)



Burning wood or coal  
can triple the amount  
of harmful pollutants  
inside your home



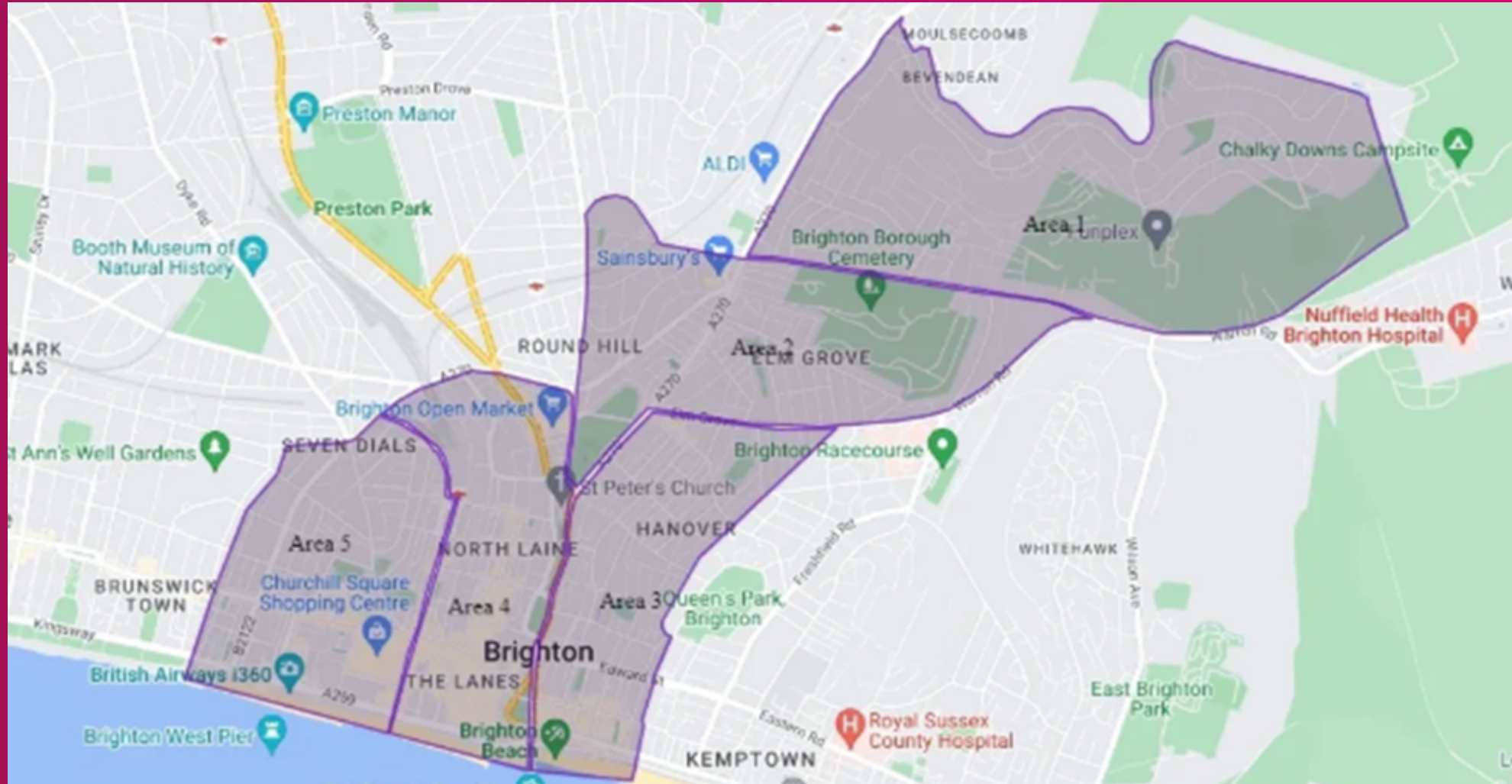
Wood burners  
and open fires

**The cosy killer**

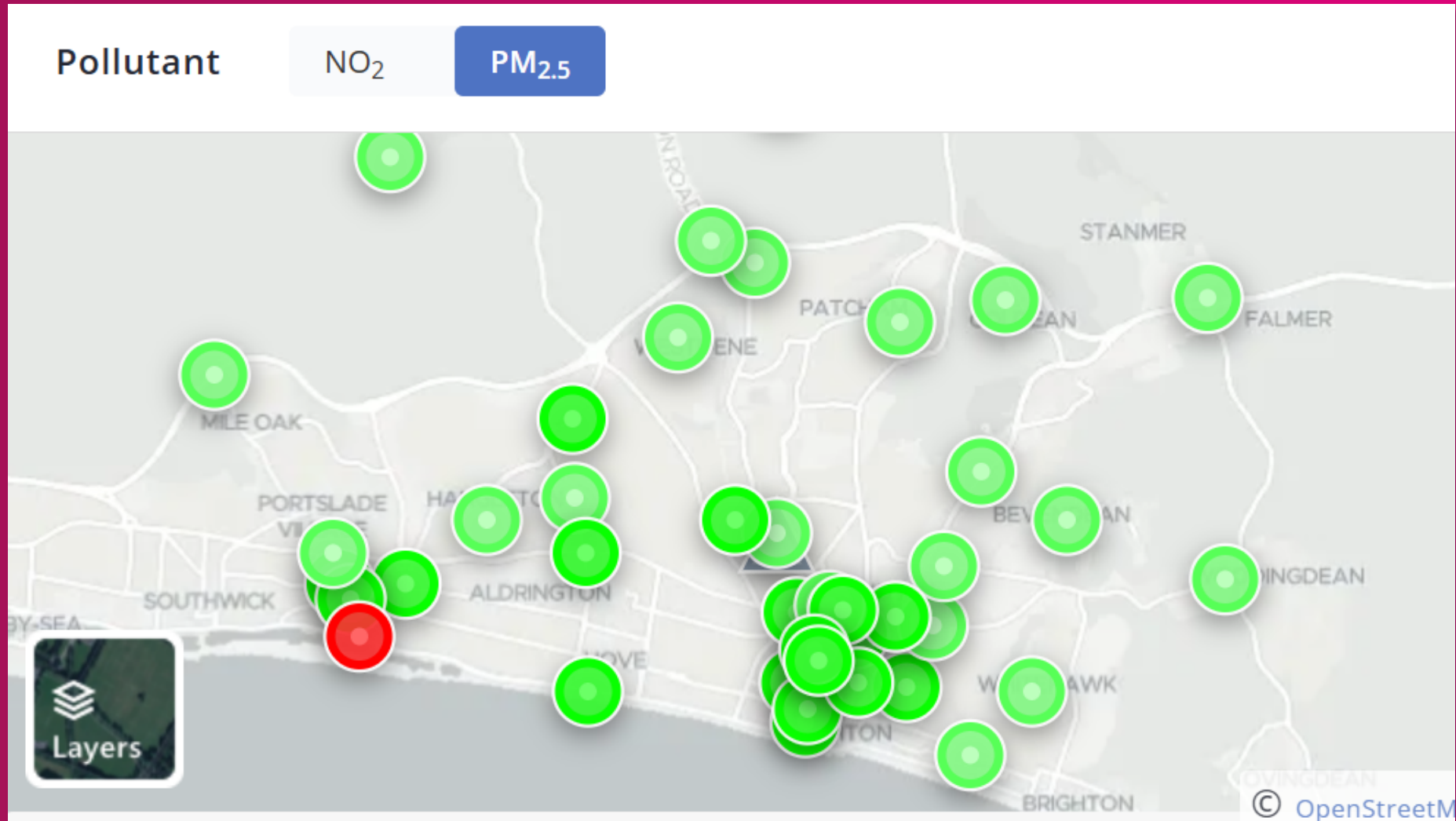
[www.brighton-hove.gov.uk/solid-fuel](http://www.brighton-hove.gov.uk/solid-fuel)



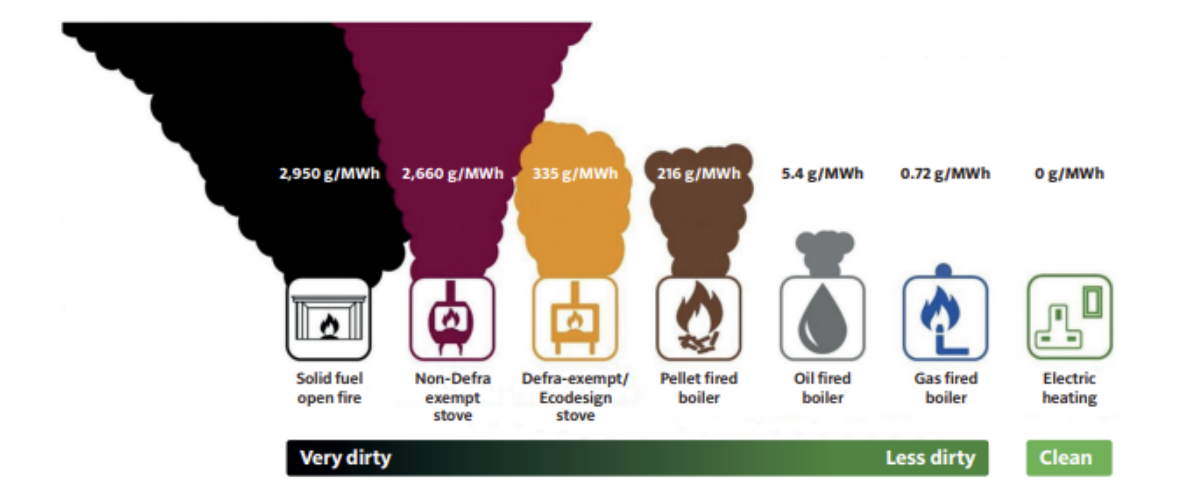
# Existing Smoke Control Areas



## New Monitoring Network



# PM2.5 Contributions From Heating Sources & Summary of Compliance Requirements in SCA's

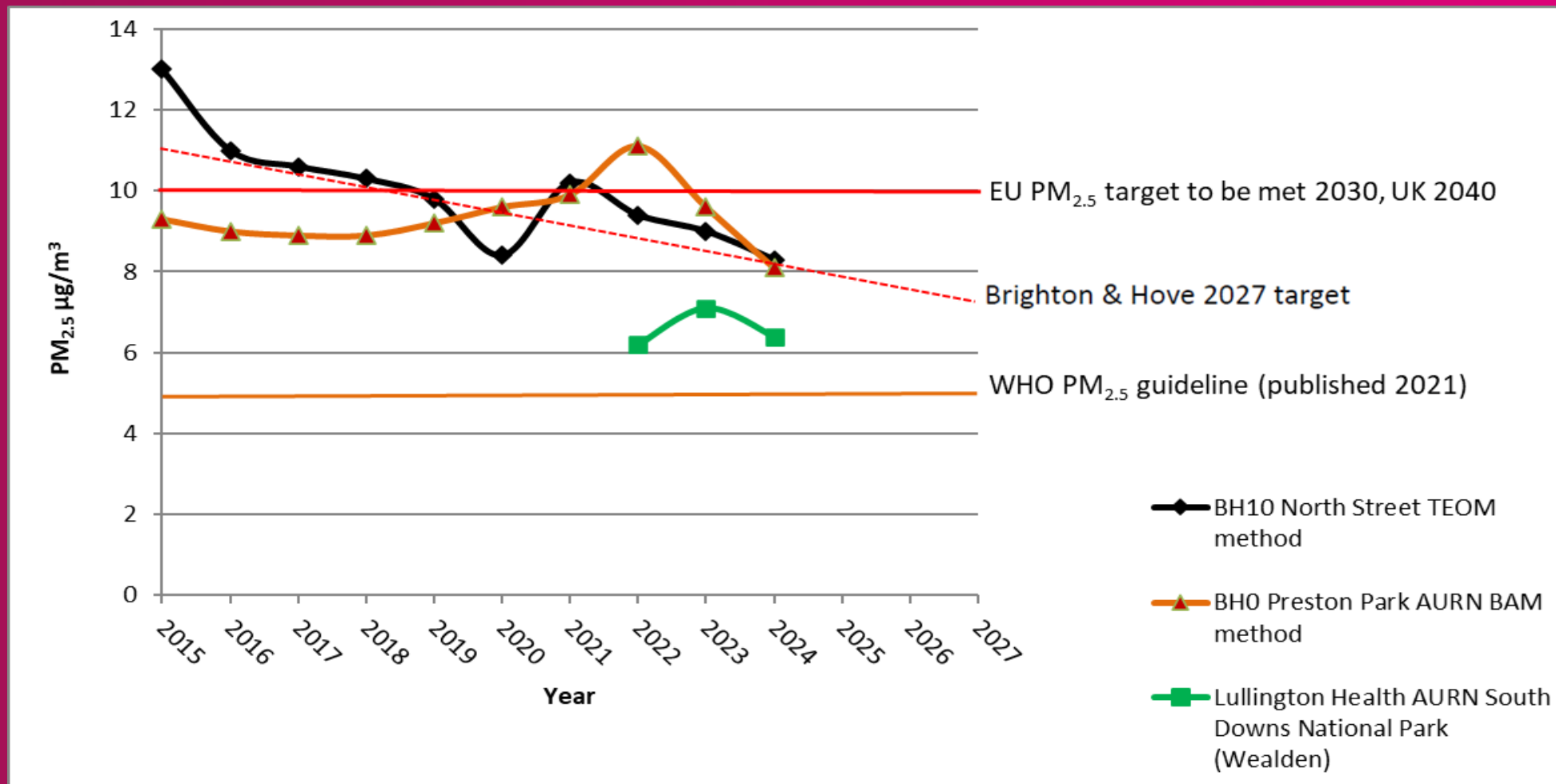


Relative PM2.5 Emissions From Domestic Heating Sources

Category	Inside SCA	Outside SCA
Chimney Smoke	Not permitted	Permitted
Fuel Use	Smokeless fuels only unless exempt appliance	Any
Appliances	Must be Defra-exempt to burn unauthorised fuels	Any
Outdoor Burning	BBQs, bonfires allowed unless causing nuisance	BBQs, bonfires allowed unless causing nuisance
Fuel Sales	Unauthorised fuels banned unless for exempt appliances	Allowed outside SCAs
Penalties	Fines for smoke or incorrect fuel/appliance use	No fines unless nuisance
Coverage	Applies to specific geographical area only	Anywhere in Local Authority outside of SCA
Temporary Sources	Not covered (e.g. generators, site equipment)	Regulated under other laws (e.g. CEMP)

Summary of Differences between SCA and Non-SCA

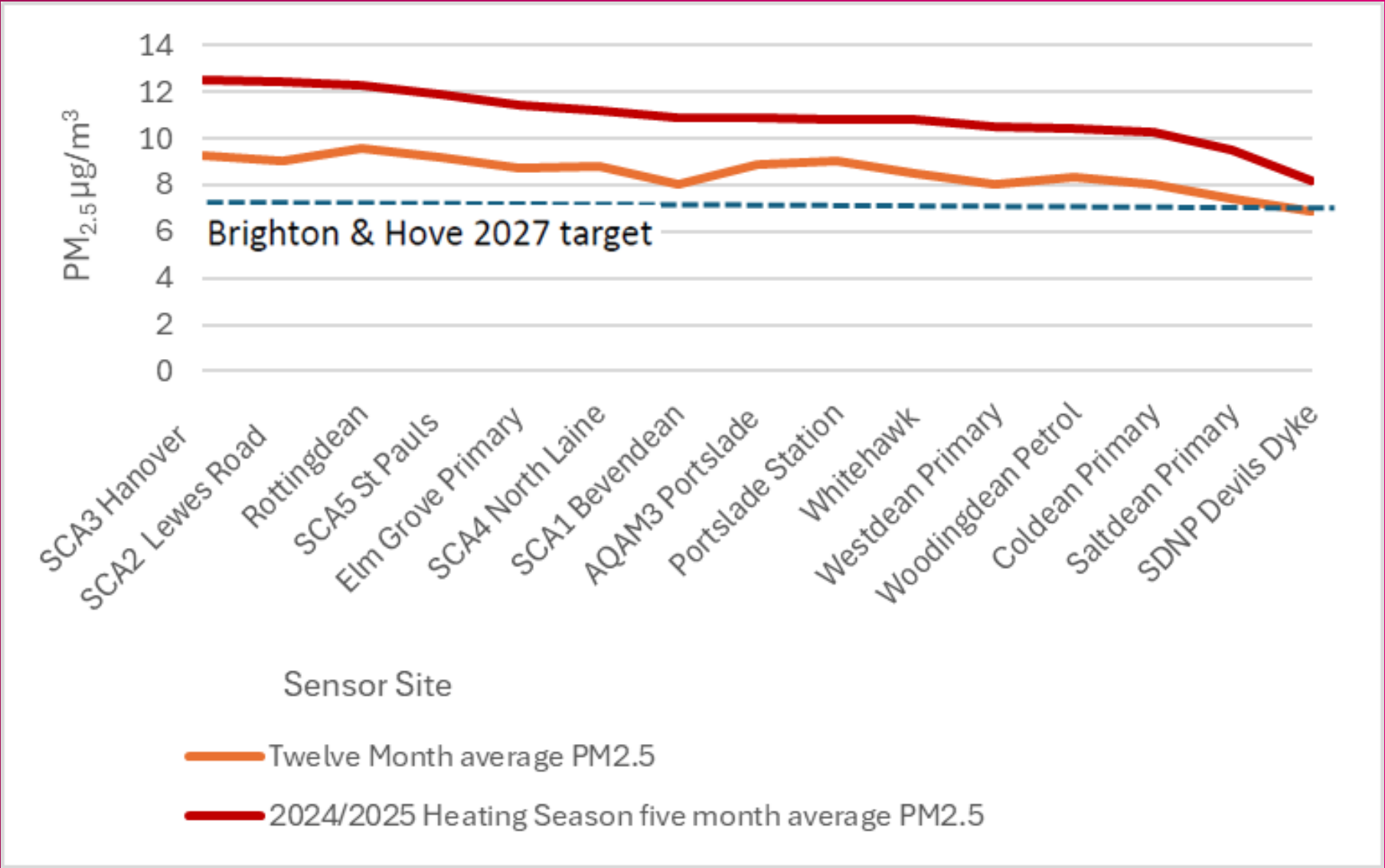
## Long-term Trend Analysis (Annual Averages) PM<sub>2.5</sub>



PM<sub>2.5</sub> automatic analysers long term trends 2015 -2024



Real-time Sensors Heating Season Compared To Twelve-Month Average

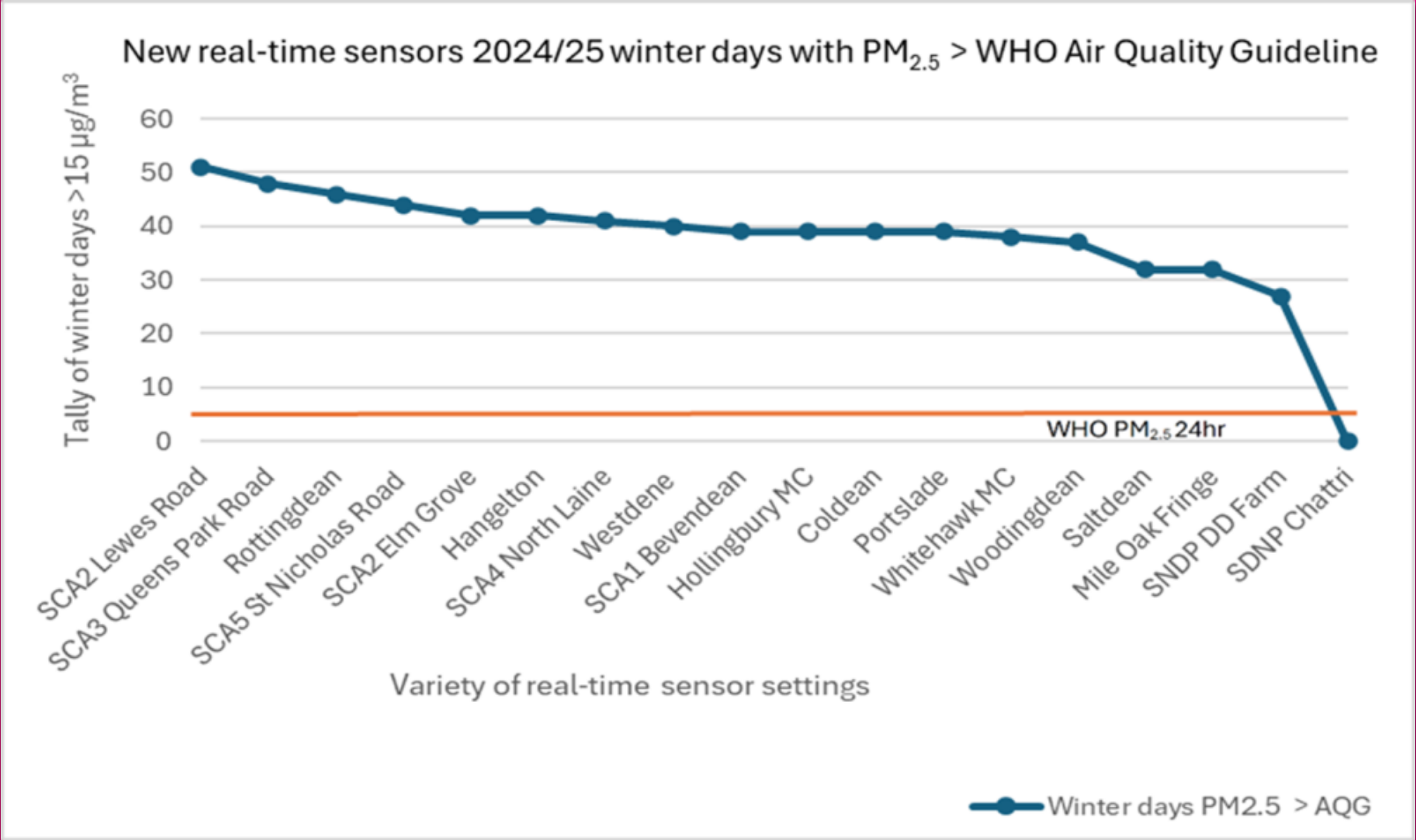


48 Hour PM2.5 at Orchard Day Nursery – January 2025





# Tally Of Winter Days Above The World Health Organisation Guidelines For Particular Matter (PM<sub>2.5</sub>)



## Conclusion & Options

---

### Conclusions:

Most of the areas reported sit along 40 days, per 24-hour period, which is well above the World Health Organisation guideline of 3 - 4 days above 15 micrograms.

Other suburbs and residential areas can be seen to have similar particulate levels as the SCA's.

Progress has been made to meet our 2027 commitments; however further work is needed.

### Options:

1. Maintain the current five smoke control areas and continue to monitor a further winters data to see if any fluctuation, establishment or longer-term trends.
2. Begin the process for extending / amending the smoke control areas (can take up to one year).
3. Continue the public awareness campaign begun in 2024
4. Continue Smoke Control area enforcement initiative and establish further Public Health initiatives.